

## What is Philosophy for Children?

'Philosophy for Children' sometimes abbreviated to 'P4C' originated in the 1960s and was developed by Professor Matthew Lipman and his associates in New Jersey. Lipman emphasised the importance of questioning or enquiry in the development of reasoning in developing a model of learning known as 'communities of enquiry' in which teacher and children collaborate with each other to grow in understanding, not only of the material world but also of the personal and ethical world around them.

P4C emphasises the importance of enquiry / questioning skills, imaginative and meaningful dialogue and careful reasoning / reflection. It aims to improve children's abilities to think creatively, critically, caringly and collaboratively through well guided discussion.

P4C is now practised in over 60 countries across the world and research studies have found it to be effective in enhancing general learning, including oracy and mathematical skills, and also in increasing children's self esteem and their moral and social development. Essentially children learn to learn through P4C, making it an invaluable methodology not only for Religious Education and Global Citizenship but across the whole curriculum.



### Course Leader: WILL ORD

Will Ord is a nationally known trainer and speaker, specialising in Thinking Skills, Philosophy for Children (P4C), Religious Education and Citizenship Education. He has been a Head of RE, Chairman of SAPERE (the P4C charity for the UK), author of several school books and a writer for the TES. Will now works full-time training educators both here and abroad and is an associate lecturer at Oxford Brookes University.



**Chevin Country Park Hotel**  
Yorkgate, Otley, LS21 3NU

Chevin Country Park Hotel is situated within extensive woodland grounds on the edge of Otley Chevin and is easily accessible by road, rail (Guiselley Station 3.3 miles, or air (Leeds Bradford Airport 2 miles). The hotel has a spa and fitness suite including swimming pool which are available to delegates and there are nature trails within the 50 acre grounds.

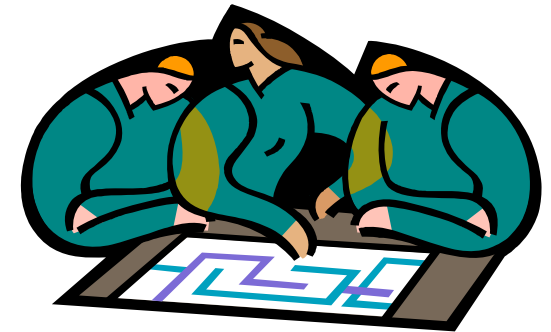


Bradford and Ripon & Leeds  
Diocesan Education Team



## An Enquiry Approach to R.E. & Global Education

~ Enhancing the Curriculum  
through Philosophy for Children



## R.E. & Global Education Conference

6<sup>th</sup> and 7<sup>th</sup> October 2009

Chevin Country Park Hotel  
(Near Otley)

## An Enquiry Approach to R.E. & Global Education

~ Enhancing the Curriculum through Philosophy for Children

### Who should attend?

All school staff who regularly work with groups of children / young people, school leaders and governors will benefit from this introduction and opportunity to gain accreditation in P4C.

It will be of particular interest to RE and Global Education Co-ordinators /Subject Leaders and Learning Mentors. Although primarily aimed at KS1 and KS2 the P4C approach is also highly relevant at secondary level.

### Leader: Will Ord

Education Consultant and  
Registered SAPERE trainer

**Dates:** Day 1 Tuesday 6<sup>th</sup> October  
Day 2 Wednesday 7<sup>th</sup> October

**Venue:** Chevin Country Park Hotel

### Cost, per delegate:

**Day 1 £ 95 for schools in the ASP (£115 schools not in the ASP)** including a two course lunch and handbook of support materials

**Days 1 & 2 £250 schools in ASP (£270 for schools not in the ASP)** including two course lunch on both days, overnight accommodation with dinner and breakfast, handbook of support materials, SAPERE Level 1 accreditation and handbook.

**\*\* Please note numbers for the Level 1 accredited course are limited by SAPERE and therefore places on Day 2 will be allocated on first come basis\*\***

This professional development conference provides two options:

- ➔ **One day introduction to the Philosophy for Children (P4C) methodology with particular application in the areas of Religious Education and Global Education.**
- ➔ **Two day SAPERE accredited Level 1 qualification in P4C**

All delegates will receive a 20 page handbook of support materials linking P4C and RE. Those participating in the 2 day training will also receive a SAPERE handbook, membership and certification.

### What will participants gain?

- ✓ Practical ways to develop good thinking, questioning and communication skills
- ✓ Understanding of the theory and practice of being a good facilitator / manager of learning dialogue
- ✓ Ways to develop their class as a 'community of philosophical enquiry
- ✓ Experience of P4C as a participant, and be able to reflect on its process and effects
- ✓ See how P4C can be applied across specific contexts as well as in regard to whole school and cross curricular targets
- ✓ Support materials with a wealth of lesson and resource ideas and a refreshing approach to teaching and learning

**SAPERE** is the Society for Advancing Philosophical Enquiry and Reflection in Education (the acronym also means "to be wise" in Latin) and is the only internationally recognised P4C charity in the UK. SAPERE has been training educators in the UK for over 12 years. There is opportunity for those who have taken the Level 1 course go on to achieve Level 2 (with accreditation towards MA) and level 3. For more information about SAPERE visit: [www.sapere.net](http://www.sapere.net)

An Enquiry Approach to  
R.E. & Global Education  
6<sup>th</sup> / 7<sup>th</sup> October 2009

Booking form

Name

School

Contact telephone

Contact email

Address for invoice if not school

I wish to participate in

Day 1 Introduction to P4C  
£95 ASP/ £115 non ASP

Day 1 and 2 Introduction and Level 1  
SAPERE accreditation  
£250 ASP / £270 non ASP

**\*\* Please note numbers for the Level 1 accredited course are limited by SAPERE and therefore places on Day 2 will be allocated on first come basis\*\***

Please indicate any special requirements, including dietary needs

**Please note: invoices will be issued prior to the event. We regret that there will be a fee of £50 for Day 1 or £120 for Day 2 for cancellations within 28 days of the event.**

Please return completed booking forms to:  
[admin@brleducationteam.org.uk](mailto:admin@brleducationteam.org.uk) or to:

Cath Hodgson  
Diocesan Education Team  
Windsor House  
Cornwall Road  
HARROGATE  
HG1 2PW